

### General Information

- Opening Hours: 9:00 A.M. to 4:45 P.M. (entrance to museum permitted until 4:00 P.M.)
- Closed: Every Monday (Museum will be closed on Tuesday if Monday is a holiday)
- Closed the day following a holiday (except Sunday)
- Year-end and New Year holidays (from December 28 to January 4)
- \*Please contact Sendai Science Museum for more details.

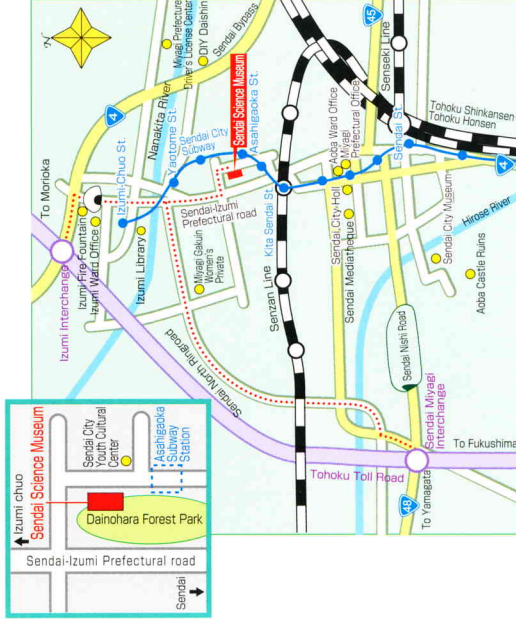
**Group Visits**  
If you plan to visit the Sendai science Museum with a large group, please notify the museum beforehand by phone, letter, or fax. Please give the group's name, number of visitors, the time and date of your visit, and whether you will be coming on a chartered bus or not.

| Admission Fees  | Adults          | High school students and school child |
|---|-----------------|---------------------------------------|
| Use division  | 500yen (400yen) | 300yen (250yen)                       |
| Personal  | 200yen (160yen) | 200yen (160yen)                       |
| Fee for driving simulator : 20 yen. (per person per ride)         |                 |                                       |
| *For groups of 30 or more people, one person gets free admission. |                 |                                       |

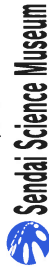
\*Please inquire at the Sendai Science Museum about an annual entry pass.

### Transportation

- Subway(North-South Line)  
Get off at "Asahigaoka station" and walk for five minutes
- Tonoku Expressway  
Exit at the Tohoku Expressway "Sendai Miyagi I.C." and take the Yaotome-Oritate Line (approximately 20 minutes drive)  
Or Exit at the Tohoku Expressway "Izumi I.C." and take Route 4 and Sendai-IZUMI Prefectural Road North (approximately 20 minutes drive)



### Inquiries



〒981-0903 Dainohara Forest Park 4-1 Abba ward Sendai city  
Telephone:022-276-2201 FAX:022-276-2204  
Homepage:<http://www.kagakukan.sendai-c.ed.jp>

### Outdoor Rock garden



35 kinds of the rock specimens that have been quarried in Miyagi prefecture are on display here.

You can see 28 kinds of trees and plants which are closely related to plant fossils excavated in Sendai.

Walk through the rocks and trees, examine them, touch them, and observe their characteristics and differences.

### Nature Observation Track



Walk along the Natural Observation Path north-east of Dainohara forest park and enjoy nature throughout the four seasons.

See various flora such as the coppice which has the Konara Japanese chestnut trees, the Japanese red pine trees along the ridge, and the aquatic plants that live along the marshes.

### 3F

#### Challenge Lab



Conduct various experiments. Some things made during the experiments may be taken home as a souvenir.

[ Hours ]

Twice a day:  
10:30 ~ 11:30 and  
14:00 ~ 15:00

### 4F

#### Guided Tours



The Museum offers guided tours of the exhibition on the 4F.

[ Hours ]

From 13:30  
Every Saturday Sunday and  
National holidays (once a day)

## 4F Natural History Exhibition

An exhibition room where visitors can experience the natural world.

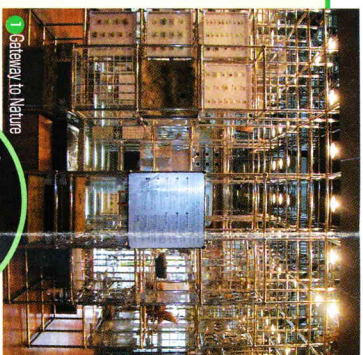
This exhibition displays living creatures that inhabit Sendai, which extends from the Pacific Ocean to the Ou mountains. The exhibition is categorized into five groups: islands, tidelands, plains, rivers, and mountains, and displayed. Fossils found in Miyagi prefecture and representative prehistoric elephants representative of that age are displayed in the Earth Science section. You can also see the mineral "Gururiku". Numerous specimens can be found inside the jungle gym-shaped forest at the center of the exhibition room.

### Gateway to Nature

Visitors to the "Gateway to Nature" can learn about nature by examining the shapes, colors, numbers, and sounds found in nature.

#### <Exhibition list>

- Eggs, nests, and cocoons
- Seeds and fruits
- Leaves and flowers
- Sea algae
- Mushrooms specimens
- Rocks
- Minerals
- Find out the shape, color, number, and sound



1 Gateway to Nature

### Regional Nature

There are 7 species of prehistoric elephants on display in the Earth Science section. The Biological Section introduces the ecosystem of the area extending from the Ou mountains to the Pacific Ocean.

#### <Exhibition list>

- 3 Life on the island
- 4 Life in the tideland
- 5 Geese migrating to the Plains of Sendai
- 6 River life
- 7 Beech trees in the Funagata mountains and life in the mountains
- 8 March of the prehistoric elephants (Sendai's geological age)
- 9 Minerals in Tohoku
- 10 Plate tectonics
- 11 Gururiku
- 12 Borehole core

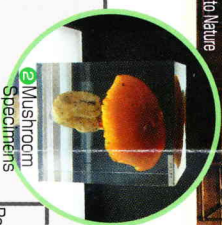


3 Sendai Elephants

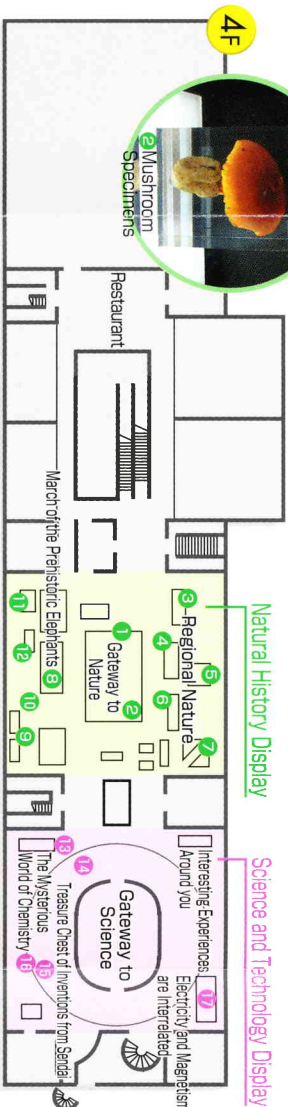


5 Goose Migrating to Plains

## 4F



2 Mushroom Specimens



## 3F Life System Exhibition

An exhibition room where you can experience the science of everyday life.

There are exhibits about life science, science of play, environmental science, and flight.

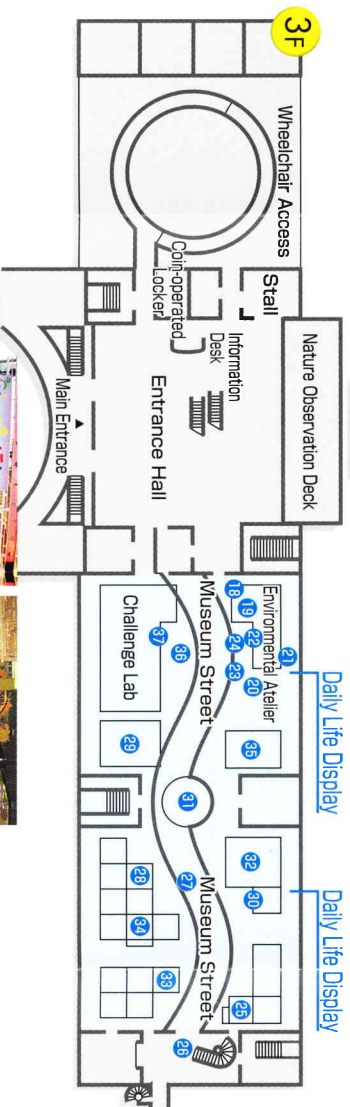
We recommend the "Challenge Lab" where you can choose which experiment to try yourself.

### Environmental Atelier

Learn about the environment from various perspectives through the 7 items on display.

#### <Exhibition list>

- 19 Introductory Wall
- 19 Global Environment Multi-display (energy/recycling, atmosphere/water, global warming and others)
- 20 Survey Sendai's Wildlife (dandelions, cicadas, and insects and more)
- 21 Surveying the environment (weather eye)
- 22 Alternative Energy (fuel cell)
- 22 Wetlands (illustrated encyclopaedia of protists, observe voblox cells)
- 22 Environment of the Hirosegawa River (model river complete with flowing water)
- 19 Global Environment Multi-vision



## 4F Science and Engineering Exhibition

An exhibition room where you can experience the wonders of the science

The "ship," which is shaped like a spaceship, is full of exhibits you can experience with all of your five senses. Four themed exhibits are located between the element columns that line the exhibition hall. Scientific technology inventions and discoveries made in Sendai are shown here. All equipment is interactive.

### Gateway to Science

Fundamental science exhibits related to length, weight, time, temperature and the elements.

#### <Exhibition list>

- Where is the center?
- The Periodic Table of Elements
- Elements Column
- Find out the temperature, length, weight, and time
- The Mysterious World of Chemistry
- Exhibits show various chemical reactions and a model of bonding molecules
- 12 Fragrance Factory
- 12 Flame reaction
- Chemistry Lab-box



18 Fragrance Factory

12 Flame reaction

### Treasure Chest of Inventions From Sendai

It is a world famous invention from Sendai.

#### <Exhibition list>

- 15 Sound carried by light
- 16 Raising magnets
- Catch the radio waves



15 Sound carried out by light

16 Raising Magnets

### Interesting Experiences Around You

Learn about phenomenon around you such as water, air, light, and sound.

#### <Exhibition list>

- Users' feet pass through acrylic columns due to the principle of total reflection
- Wave motion experiment equipment
- Sound lens
- Archimedes' principle
- Friction and heat
- Electricity And Magnetism Are Interrelated
- Display related to electricity and magnetism, etc.
- Challenge lab/conduct experiments and use the microscope
- 17 Solar car
- Electrical current created by a magnet
- 17 Solar Car



17 Solar Car