

Welcome to "Touch science" "Try science"

There are many encounters with real things at the science museum. Both children and adults are welcome to enjoy this experience and deepen your science learning.



Held daily

Challenge Lab

3F exhibition room (admission fee required)

You can try simple experiments and science crafts that both children and adults can enjoy. No application required.

Workshop Science Toys

Various Events, Science Show

Today's content ▶



Special Exhibition

Various exhibitions are held depending on the time of year.

Current content ▶



Outdoor Rock Garden (free)

35 kinds of the rock specimens that have been quarried from inside and outside Miyagi Prefecture are on display here. You can see trees and plants which are closely related to plant fossils excavated in Sendai.

Request from the museum

- Eating and drinking prohibited in the exhibition room.
- Preschool children must be accompanied by a guardian.
- You must not run inside the building.
- Please handle the exhibits with care.

General Information

- Opening Hours** 9:00 A.M. to 4:45 P.M. (entrance to museum permitted until 4:00 P.M.)
- Closed** Every Monday (Museum will be closed on Tuesday if Monday is a holiday)
Closed the day following a holiday (except Sunday)
Year-end and New Year holidays (from December 28 to January 4)
※Please contact Sendai Science Museum for more details.
- Group Visits** If you plan to visit the Sendai science Museum with a large group, please notify the museum beforehand by phone, letter, or fax. Please give the group's name, number of visitors, the time and date of your visit, and whether you will be coming on a chartered bus or not.

Admission Fees

Group of more than 30 people(※)

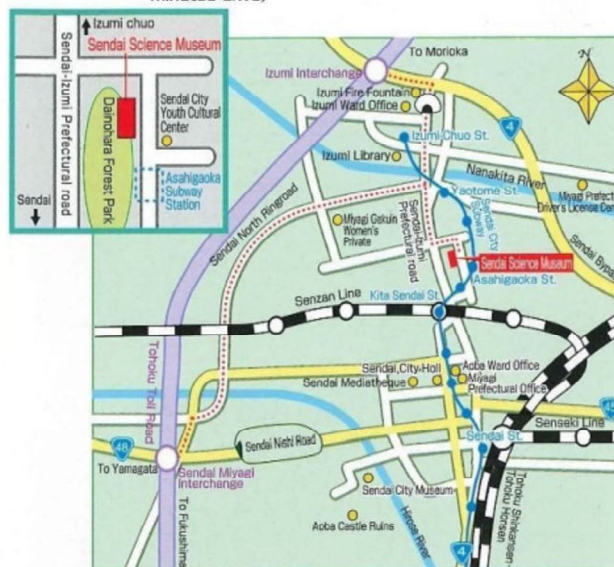
Use division	Adults	High school	Junior high and Elementary school
Personal	550	320	210
Group(※)	430	260	170

(※)For group, free for 1 in 30 people

※Please inquire at the Sendai Science Museum about an annual entry pass.

Transportation

- Subway(North-South Line)
Get off at "Asahigaoka station" and walk for five minutes
- Tohoku Expressway
Exit at the Tohoku Expressway "Sendai Miyagi I.C." and take the Yaotome-Oritate Line (approximately 30 minutes drive)
Or Exit at the Tohoku Expressway "Izumi I.C." and take Route 4 and Sendai-IZUMI Prefectural Road North (approximately 30 minutes drive)



Inquiries

HOKUSHU Sendai City Science Museum

〒981-0903 4-1 Dainohara Forest Park Aoba ward Sendai city

Telephone:022-276-2201 FAX:022-276-2204

Homepage:<http://www.kagakukan.sendai-c.ed.jp>

HOKUSHU Sendai City Science Museum

Touch science Try science



April 5, 2025 The all floors exhibition room has been renovated and opened !



Sendai City has received support from HOKUSHU Corporation Limited as a naming rights sponsor.

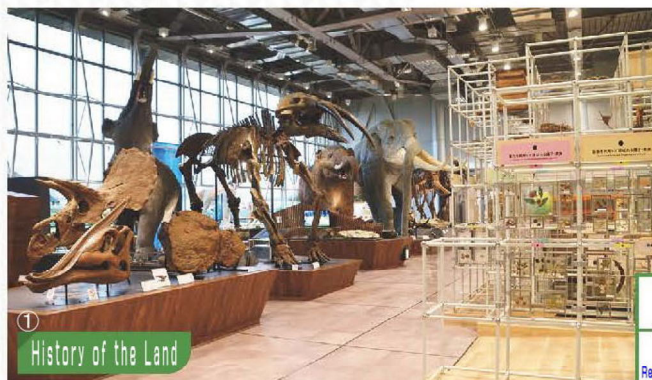


4F

Nature in Sendai, Miyagi

Explore the nature around us.

You can experience the workings of the natural world from every angle.
 "History of the Land" Conveying the origins of the land of Miyagi and Sendai.
 "Collections from Nature" Observing rich natural specimens using all five senses.
 "Gateway to Nature" Consists of impressive tree dioramas that take advantage of the high ceilings.



① History of the Land

"History of the Land" Impressive ancient elephants will welcome you. Introducing the environment and lots of species that lived in each era. Using fossils, rocks and movies from Miyagi Prefecture.

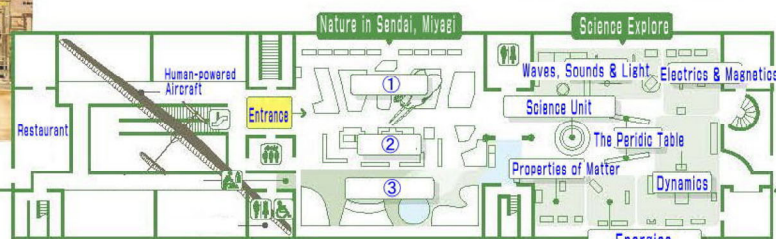


② Collections from Nature

You can learn how to see nature by freely observing specimens such as plants, butterflies, mushrooms, and rocks by touching them and looking up at them.

③ Gateway to Nature

Diorama reproduces mountains, hills, and coastal areas. You can enjoy an amazing visual experience at "Sky Adventure of Hirose River", which consists of dynamic movies from downstream to upstream of the Hirose River.



4F

Science Explore

Explore the fundamentals of science to get a solid understanding

There is a science unit where you can learn the basics of science such as length, weight, area, volume, and time while relating them to the phenomena around you.



Around the periodic table, devices are placed around themes such as the properties of matter, the use of energy, waves, sound, and light.

3F

Life and Science

Let's experience wonder science in daily life.

2025 Renewal

There are 7 zones in Wonder Science Room where you can experience the various wonder things in daily life.

① Challenge Lab ② Nature & Disasters ③ Wonder of Myself ④ Wonder Tower ⑤ Garage ⑥ Wonder of the Senses ⑦ Collaborative with University or Enterprise Lab.

- There is a baby care room (a baby bed for changing diapers in there) near the east toilets on the 3rd and 4th floors. There is a diaper space near the west toilets on the 2nd floor.
- The special exhibition room on the 2nd floor is only used for special events.
- You can also see the library and taxidermy exhibit on the 1st floor.

▼ Pictogram



Toilet for the disabled



Baby care room



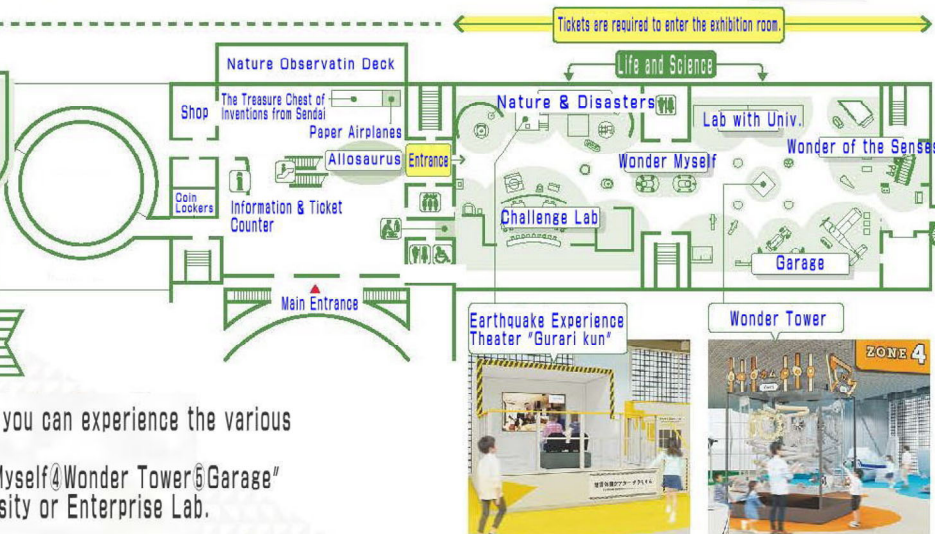
Elevator



Escalators



Information & Ticket Counter



There are many exhibits where you can experience wonder scientific things in our daily life from various aspects.